

Digital recorder with 8 counting inputs

- 8 digital inputs TTL level or dry contact
- Selectable 8 bit (0-255) or 16 bit (0-65535) counters
- Easy to connect and use
- Associated software shows data in real engineering units
- Long battery life (up to 2 years).
- Real time measurements output.

Applications

Electricity, water and gas distribution.
Production monitoring.
Traffic statistics.
Dosages recording.
Access counting.

DL400C recorders are also available as OEM products, with or without housing, for integration into custom designed equipment.



DL400C recorders and accessories:

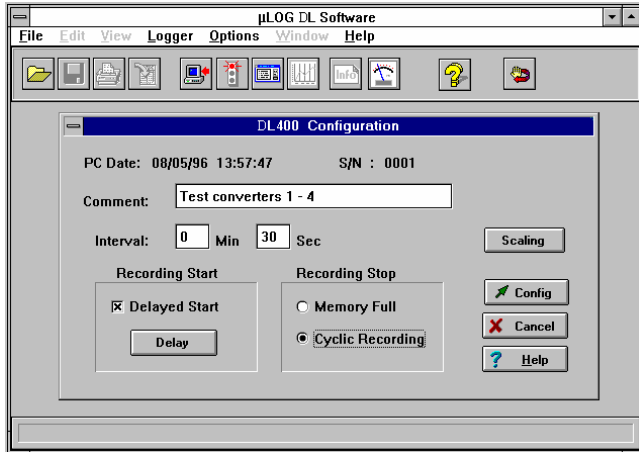
DL400C	: eight 8/16 bit counting inputs, memory 16 kb.	CI8xV	: Connection cable for eight direct inputs
-EXT	: Memory extension to 64 kb.	RDFIX	: DIN rail fixation adapter.
D9-2F	: PC connection cable.	μLOGDLC	: DL400C Windows™ software.

μLOGDLC Software

The user-friendly Windows™ μLOGDLC software allows for configuration of DL400C recorders and for processing recorded measurements.

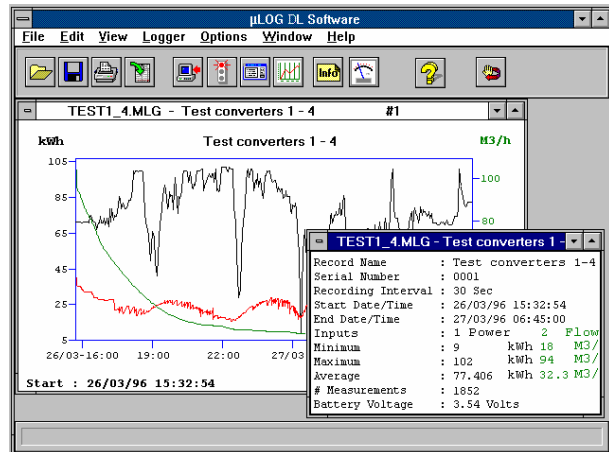
Configuration:

Set general parameters such as logger identifier, recording interval, delayed start timings, etc
Parameters for each individual input include activity, function, unit and pulse weight.



Processing:

Use the associated μLOGDLC software to download and save the recorded data. The data can also be displayed graphically or exported to other software (Eg. spreadsheet).



Technical Specifications

- **Inputs:** 8 pulse counting inputs or 7 pulse counting inputs and 1 trigger input (storage signal)
- **Counting capacity:** 8 bit (0-255) or 16 bit (0-65535), software configurable.
- **Input signals:** voltage (max 28V) or dry contact
- **Input impedance:** 100 kohm.
- **Maximum working input voltage:** 24V DC
- **Maximum counting frequency:** 50 Hz
- **Minimum counting pulse width:** 10 milliseconds
- **Power supply:** mixed - lithium internal battery and/or supply from RS232 connection.

- **Battery autonomy:** up to 2 years typical
- **Memory capacity:**
 - DL400C: 16 kb: 15.000 8-bit measurements or 7.500 16-bit measurements.
 - -EXT : 64 kb: 60.000 8-bit measurements or 30.000 16-bit measurements.
- **Input connection:** D sub9 Way connector (8 inputs with common point)
- **Case:** polycarbonate 82 x 80 x 55mm
- **Weight:** 250g (including battery).

μLOG general specifications

- **Recording interval:** 1 second to 60 minutes user configured)
- Delayed recording start option
- Stop on memory full or overwrite oldest records (FIFO).
- Download data without interrupting recording
- **Security :** automatic stop on low battery, non volatile memory.

- **Communication:** RS232 interface – D Sub 9F
- **Temperature limits:** -20°C to +65°C.
- **Software :** Windows (95, 98, NT4, 2000, XP); recorder configuration, download & save data, display data graphically, view real-time data, export data & more...



NewFound Energy Ltd
Park View House
Worrall Street
Congleton
CW12 1DT

Web. www.newfound-energy.co.uk
Email. info@newfound-energy.co.uk
Tel. +44 (0)1260 290151
Fax. +44 (0)1260 290811