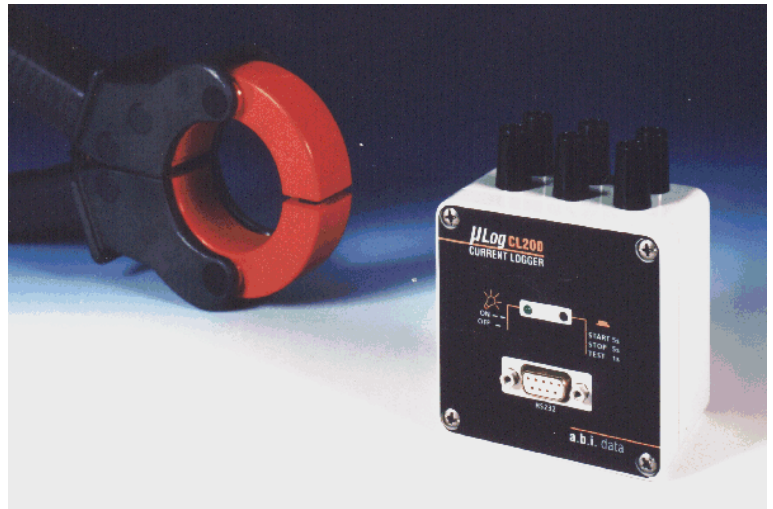


Three Phase Current Logger

- Portable three-phase recorder
- Suitable for use with current clamp probes with AC output or CT's
- Long battery life (up to 2 years)
- Easy to connect and to use
- Recorded data stored in real engineering units.
- Associated software provides analysis of collected data
- Real time measurements output



Applications

- Recording load in cables and transformers.
- Aerial electricity distribution (recording in post-mounted enclosures)
- Power management (half hour peaks)
- Monitoring long term current variations
- Phase balance monitoring

CL200 recorders and accessories:

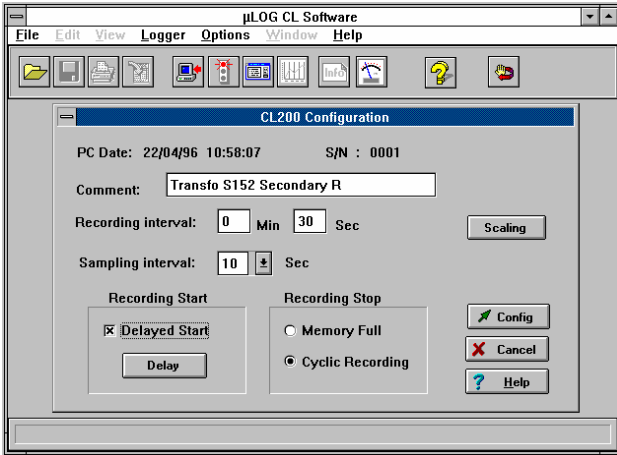
CL203-1A	: 3 x 1A AC current inputs; 60.000 readings memory.	D9-2FM	: PC connection cable.
CL203-5A	: 3 x 5A AC current inputs; 60.000 readings memory.	RDFIX	: DIN rail fixation adapter.
CL203-1V	: 3 x 1V AC voltage inputs, (other on request); 60.000 readings memory.	CURRENT PROBES	: Various types of clamp-on current probes ranging from 10 to 3000A AC.
CL203-xV	: 3 x xV voltage inputs (specified on order); 60.000 readings memory.	μLOGCL	: CL200 Windows™ software.

μLOGCL Software

The user-friendly Windows™ μLOGCL software allows for configuration of CL200 recorders and for analysing the recorded measurements.

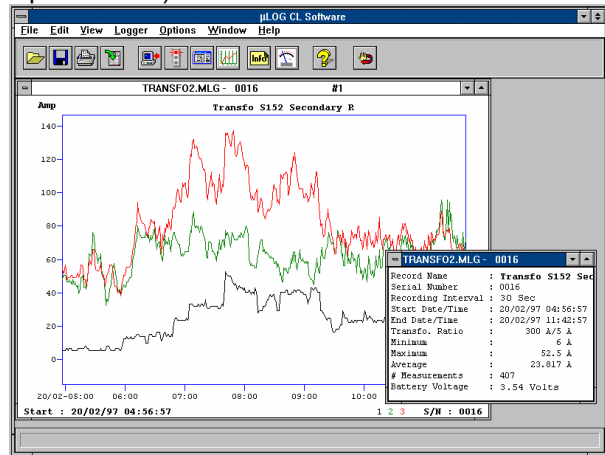
Configuration :

Set general parameters such as logger identifier, recording interval, primary CT current, delayed start timings etc.



Processing :

Use the associated μLOGCL software to download and save the recorded data. The data can also be displayed graphically or exported to other software (Eg. spreadsheet).



Technical Specifications

- **Input(s)** : AC 50 Hz (60Hz option), for connection to current clamp probes or CT's; 3 current or voltage inputs with a single range (1A/5A/1V).
- **Acceptable input current surge**: 20% (1.2A for 1A inputs; 6A for 5A inputs).
- **Accuracy**: ±1% (frequency of 50Hz + 5%).
- **Power supply**: lithium battery, 6 months to 2 years life.
- **Memory capacity**: 60.000 readings.
- **Sampling interval**: 1 to 30 seconds.

- **Recording interval**: average of sampled values recorded every 1 second to 60 minutes (minimum setting = sampling interval).
- Recording initialisation via hardware switch (i.e. without PC).
- **Input connections**: insulated 4mm security banana sockets.
- **Dimensions**: CL203: 100 x 82 x 55mm.
- **Weight**: 250g (including battery).

μLOG general specifications

- **Recording interval**: 1 second to 60 minutes (on configuration).
- **Starting recording**: on programmed date and time or without delay.
- Stop on memory full or overwrite oldest records (FIFO).
- Download data without recording interruption.

- **Security** : automatic stop on low battery, non volatile memory.
- **Communication**: RS232 interface – D Sub 9F connector.
- **Temperature limits**: -20°C to +65°C.
- **Software** : under Windows (95, 98, NT4, 2000, XP); recorder configuration, download & save data, display data graphically, view real-time data, export data & more...



NewFound Energy Ltd
Park View House
Worrall Street
Congleton
CW12 1DT

web. www.newfound-energy.co.uk
email. info@newfound-energy.co.uk
Tel. +44 (0)1260 290151
Fax. +44 (0)1260 290811