

MicroATLASEvo

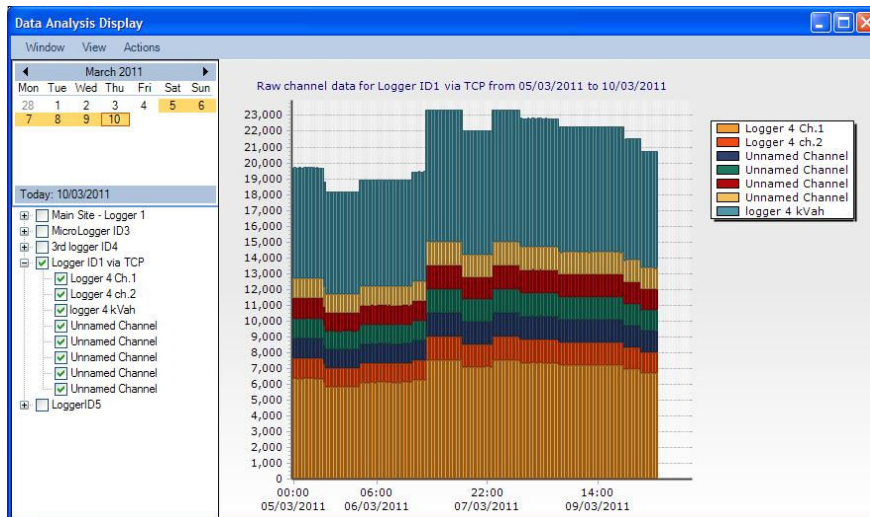
Resource Monitoring System

INTRODUCTION

New to the range of ATLAS Energy Monitoring Systems is **MicroATLASEvo**.

Designed with the smaller energy user in mind, or those companies wishing to formulate their own data manipulation capability, the **MicroATLASEvo** package provides automatic data collection from any number of ATLAS IV and ATLAS MicroLogger outstations.

The data collected is stored in daily comma separated (CSV) text files allowing easy analysis in any spreadsheet application or use by another reporting/data manipulation package.



THE SYSTEM

ATLAS systems are designed to monitor and record the pulsed outputs from resource meters into an ATLAS μ -logger or Atlas IV logger on a site to provide for energy efficiency efforts. All possible units of consumption are catered for so almost any resource is provide for by ATLAS and the user can enter different pulse values for each input, to several decimal places if required.

LOGGER OUTSTATIONS

Any combination and number of Atlas IV Loggers & MicroLoggers may be used with the **MicroATLASEvo** software.

The DIN rail mounted MicroLogger is designed for pulse recording in electricity switch-room cabinets or suitable enclosures adjacent to the meters being monitored and has 4 input capability in addition to the half hour synchronisation pulse (a 15 minute recording period system is also available).

For those needing a larger capacity, Atlas IV loggers are housed in IP66 enclosures and are available in four sizes with 8, 40, 72 or 104 input channel capacity.



ATLAS IV Logger



DIN Rail Mounted ATLAS μ -Logger

Data is stored into 30 minute periods (15 minute periods an option) with all loggers having a memory capacity equivalent to at least 1 month of data. Battery backup capabilities enable continued operation of the system in the event of mains power loss to the logger. A warning is provided to the user to investigate cause of the power loss and rectify.

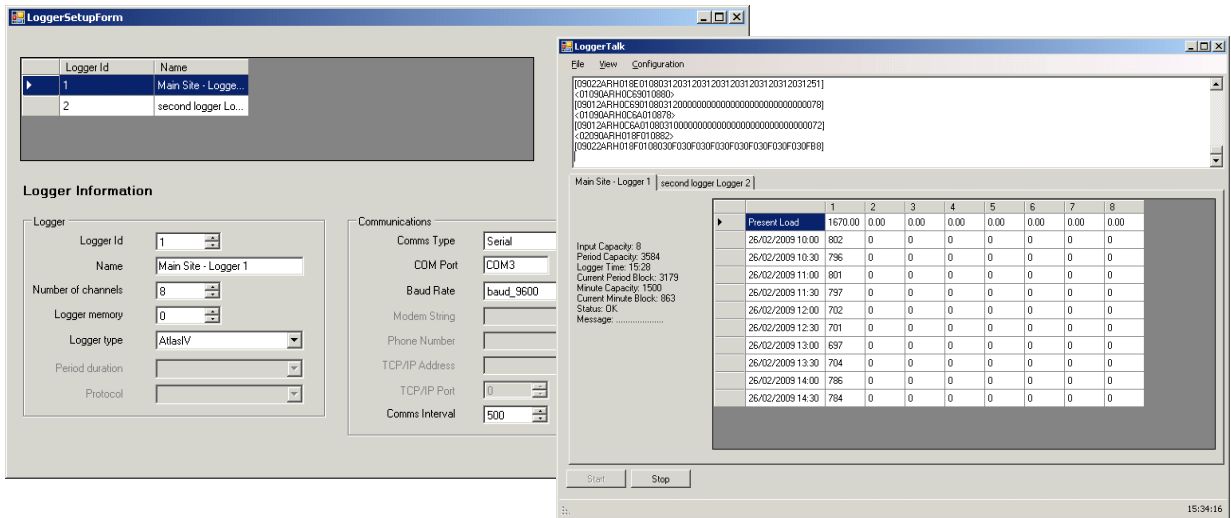
SYSTEM COMMUNICATION

Data recorded can be stored on either a local PC or on a shared server. If required the communication link can be continuously connected or with the PC set to automatically retrieve data at a user set interval. This will ensure that any system user is confident that he has current data available at any time for analysis. Various communications options exist for either the ATLAS IV Loggers or MicroLoggers with suitable communications adaptors;

- direct cable connection (RS232 or RS485)
- via TCP/IP Ethernet network
- via radio, telephone or GSM modem

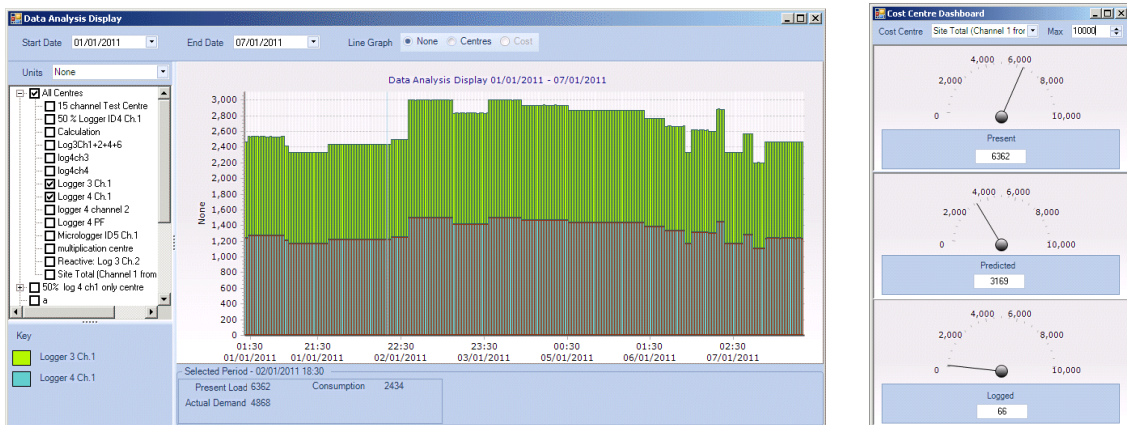
SYSTEM SOFTWARE

The simple to use, Windows based **MicroATLASEvo** software provides for logger configuration, data retrieval, viewing in graphical form and export of data to a spreadsheet for manipulation. Indeed the data collected from the ATLAS system loggers is stored automatically in Comma Separated (CSV) text files, allowing the user to easily manipulate the data in any spreadsheet application.



To discuss your meter requirements or other ATLAS packages contact us at our office or see the information provided on our web-site.

Although it is intended that the user use simple spreadsheet applications for data analysis, if required, custom report facilities can also be prepared based on client specifications. Furthermore additional **ATLASEvo** modules can be added to provide live displays with dashboard and bar/line charts, report preparation, tariff costing, automatic report scheduling etc.



NewFound Energy Limited

Park View House, Worrall Street, Congleton,
Cheshire CW12 1DT, England
Tel +44 (0)1260 290151 Fax +44 (0)1260 290811
sales@newfound-energy.co.uk
www.newfound-energy.co.uk