

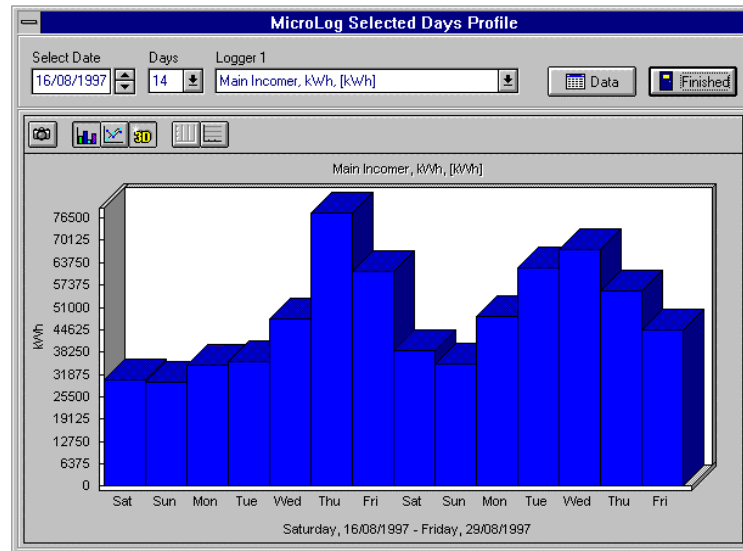


Authorised User No. 00443

The ETL symbol is a UK registered certification mark of the Carbon Trust

Micro-ATLAS

Resource Monitoring System



INTRODUCTION

For many years the ATLAS energy monitoring and management system range has been used by the larger energy users in the U.K. and overseas. To extend this powerful capability to the smaller energy user, not requiring the real-time display and extensive reporting capability of ATLAS, the newly updated **Micro-ATLAS** System is available.

THE SYSTEM

The system is designed to monitor and record the pulsed outputs from pulsing resource meters into an ATLAS μ -logger on a site. This can be on a permanent basis or temporary with the ATLAS μ -logger being moved to different locations to suit the users requirements. All possible units of consumption are catered for and the user can enter different pulse values for each input, to several decimal places if required.

The basic modules of the system are

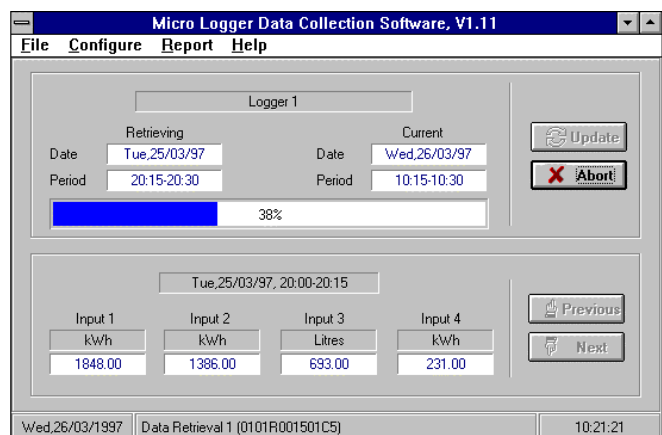
μ -LOGGER

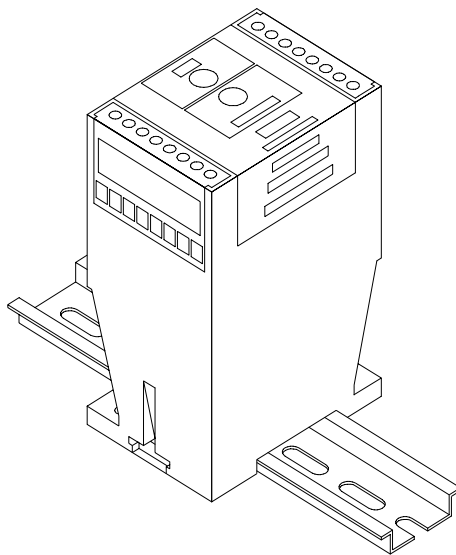
These DIN rail mounting ATLAS μ -Loggers are designed for pulse recording in electricity switch-room cabinets or suitable enclosures adjacent to the meters being monitored and have 4 input capability in addition to the half hour synchronisation pulse (a 15 minute recording period system is also available). The standard system is supplied with one ATLAS μ -Logger with communication by direct RS 232 or modem as required. Up to a total of 8 μ -loggers can be used on the same or different sites with enhanced software.

The ATLAS μ -Logger is normally mains powered but in the event of local power loss will continue to operate for up to 24 hours powered from internal trickle charged batteries.

Pulses are accumulated into half hour, (15 min option) consumption periods and retrieved by a personal computer at a user defined interval. The ATLAS μ -Logger has memory capacity to provide for 42 days of data [30 minute configuration] before it is necessary to use a computer to copy the recorded data.

Data recorded can be copied into the PC either locally or remotely via a modem link. If required the communication link can be left connected with the PC set to automatically retrieve data at a user set interval, e.g. every 15 minutes, 30 minutes, hourly or daily.





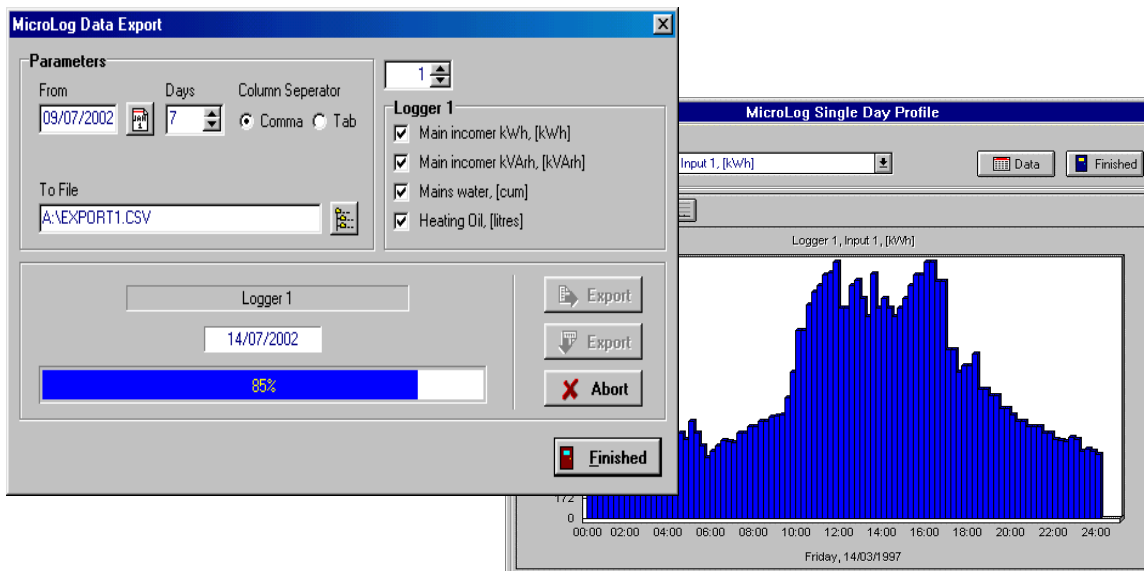
DIN Rail Mounted ATLAS μ -Logger

SYSTEM SOFTWARE

The Windows based **Micro-ATLAS** software provides for data retrieval, viewing in graphical form and export to a spreadsheet for manipulation. The collected data is stored on the PC hard disc in a database, a copy of which could be accessible using a database manager.

The system software will be readily used by any Windows user, versions available will run under Windows 95, 98 and NT and features :

- a) A communication display which visually confirms data collection.
- b) Configuration displays for the μ -Logger and any modem being used.
- c) Allocation of each input to **any** unit of consumption and pulse value.
- d) Automatic data retrieval which can be programmed to occur at regular intervals.
- e) Re-retrieval of data if required.
- f) Display in graphical format for a single or selected days for each input. These 'pages' can then be copied to the clipboard for use elsewhere in other packages.
- g) Data export in either horizontal or vertical format for all or selected Logger inputs.



The **Micro-ATLAS** software can be used to monitor up to 8 μ -Loggers at different locations with each μ -logger having it's own I.D. An enhanced version of the software provides for fully automatic data collection and saving to a user specified file of daily data for up to **100** of the 4 input μ -Loggers which could be widespread around the country or even further afield. If required the file can be automatically e-mailed to a third party.

NewFound Energy Limited

Park View House, Worrall Street, Congleton,
Cheshire CW12 1DT, England
Tel +44 (0)1260 290151 Fax +44 (0)1260 290811
e-mail sales@newfound-energy.co.uk
www.newfound-energy.co.uk